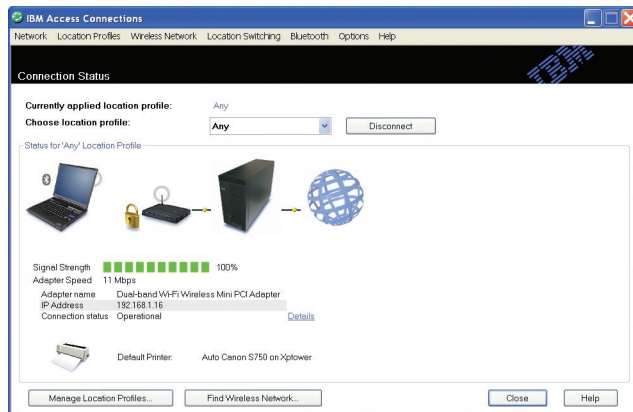




The easiest wireless and wired connectivity

IBM Access Connections



Access Connections Location Profile Status Window

Stop costly drains on your IT resources.

Office hoppers. You know them. They expect to be able to work from the visitor's office in Bombay as easily as the home office in Berlin. Not surprisingly, that makes them a big drain on help desk resources. You find yourself repeatedly explaining how to accommodate new locations. You help them change IP settings, define the default printer—or even gain secure wireless access.

Highlights

- **Help users plug in and plug out more easily. In distant cities or on the next floor, IBM Access Connections can automatically reconfigure wireless network and Ethernet network settings.**
- **Grant mobile staff easier, secure network access. Access Connections supports all the major wireless security protocols and helps your mobile staff manage them.**
- **Let employees connect quickly at airports, coffee shops and other wireless hotspots. Access Connections can find new wireless networks fast!**
- **Want to reduce help-desk calls? The simple setup wizard helps eliminate errors when users add new location profiles.**
- **Empower employees to diagnose and fix some network connection problems themselves.**
- **Roll out without leaving your chair. Deploy and maintain Access Connections profiles and wireless settings across your business.**

IBM can help. Access Connections is an IBM ThinkVantage® Technology included on all IBM ThinkPad® notebooks. It can save you and your mobile users time by helping reduce long, expensive support calls. Here's how:

Employees connect more easily.

Access Connections can automatically reconfigure wireless network and Ethernet network settings. That helps your mobile users connect more easily. How? Employees can access location-specific information in individual profiles that can be saved and recalled at any time.

Call **1 888 SHOP IBM** or go to **ibm.com** (U.S.) or **ibm.ca** (Canada) to buy direct, locate an IBM reseller or for more information.

No other single utility manages so many different hardware and network settings.

Easy-to-use location profiles are the key.

Access Connections offers location profiles for all the places employees expect to e-mail, instant message (IM), browse the Web, print important memos or peruse confidential data. That's just about everywhere. Plus, the simple profile setup wizard helps eliminate errors when your mobile workforce adds new location profiles.

Without Access Connections, employees would need to open many different program interfaces to change system settings. That might include launching Microsoft® Windows® Network Connection Manager properties, Internet Explorer properties, printer settings as well as a separate utility for wireless security.

With Access Connections, all of these changes can be accomplished from one, easy-to-use interface. It actually guides a user through a step-by-step

“The multiple network environment solution offered by IBM and managed by Access Connections should offer a 20% productivity gain for users.”

—Technology Business Research, March 2003

process that leaves little question about what to do next.

In just a few clicks, staff can save network settings and different security protocols as well as default printers—location by location. All this can make your mobile user's life much easier and save you expensive time on the phone. That could give you the time you need to focus on higher-priority IT objectives.

Staff can connect at airports in a flash.

What else can Access Connections do in just a few clicks? Find and use new wireless networks. For instance, it can quickly create a profile for a wireless

hotspot in an airport waiting area. In addition to wireless network information, that profile can also include virtual private network settings. Staff can sit, connect and securely get to work without a call to tech support.

The prognosis looks good.

In the past, if one of your on-the-go people encountered network connection trouble, you could count on a long phone call. With new diagnostic features, Access Connections can help employees figure out many connection issues by themselves. It can even help them fix some problems—maybe without picking up the phone.

Look at all the settings Access Connections can help manage				
Launch VPN	✓	✓	✓	✓
Default Printer	✓	✓	✓	✓
Internet Explorer Home Page	✓	✓	✓	✓
Internet Explorer Proxy	✓	✓	✓	✓
Internet Connection Firewall	✓	✓	✓	✓
Internet Connection Sharing	✓	✓	✓	✓
File and Printer Sharing	✓	✓	✓	✓
DHCP or IP Address	✓	✓	✓	✓
DNS	✓	✓	✓	✓
Hardware settings	✓	✓	✓	✓
Security	✓			
	Wireless LAN	Wired LAN	Wireless WAN	Modem

Let the right people in and keep data safe.

Access Connections supports all the major wireless security protocols. In fact, as long as your notebooks are configured with the necessary tools, Access Connections can save different security standards by location, just like other network settings. It can help your mobile staff manage them, too.

To help further protect your systems, Access Connections can leverage the built-in hardware and downloadable software of the IBM Embedded Security Subsystem (select models). Together, they help protect the things that make your systems safer, including your office hopper's Cisco LEAP user ID and password (select models).

Roll out and maintain Access Connections without leaving your chair.

Need to update settings to office location profiles on the top floor? Or change security profiles in

department 67? No problem. Simply add remote deployment features to Access Connections. These features are available by download from IBM at no additional charge.

This technology can help you create location profiles for remote distribution. That can save users the step of setting up specific, commonly-used, profiles individually. Right from your office, you can deliver Access Connections wireless settings and profile updates to ThinkPad notebooks all over the company.

The innovations go on and on.

Looking for more efficiency-improving, business-building technologies? IBM has them. They're called IBM ThinkVantage Technologies. They have been developed to help businesses increase efficiency. To learn more about Access Connections or other IBM ThinkVantage Technologies, visit ibm.com/thinkvantage

Access Connections works with cellular networks, no problem.

It's called wide area network (WAN) access. ThinkPad notebooks can be equipped with optional PC cards that offer WAN access from Sprint PCS, AT&T Wireless or Vodafone. (The service is sold through the providers.)

These new services offer wireless data access at locations where wired network connections aren't available and wireless network access is nowhere to be found. Access Connections manages wide area network (WAN) settings through location profiles just like other network adapters.

ThinkVantage Technologies Service and Support.

Rollouts of even the most user-friendly new technology can be challenging at times. To help you get the most out of ThinkVantage Technologies, IBM has specialists that can provide everything from onsite analysis and planning to installation assistance.

Help ensure a successful and efficient deployment. Ask about ThinkVantage Technologies Service and Support today.

Access Connections[†] loves wireless technology.

Fully supported wireless LAN adapters*:

- All IBM mini PCI wireless LAN adapters, including the NEW IBM 11b/g Wireless LAN Mini PCI Adapter
- All IBM wireless LAN PC Cards, including the IBM 11a/b/g Wireless LAN Cardbus Adapter
- Intel PRO/Wireless LAN 2100 3B Mini PCI Adapter
- Cisco Aironet 350 Mini PCI Adapter and Cisco Aironet 350 PC Card

Supported wireless LAN security:**

- | | |
|----------------------------------|-----------------------------------|
| • 128-bit WEP | • Cisco LEAP, PEAP-GTC |
| • Wi-Fi Protected Access | • AES (Advance Encryption System) |
| • 802.1x, EAP-TLS, PEAP-MSCHAPV2 | |

[†] Access Connections is only supported in Microsoft Windows 2000 and Microsoft Windows XP environments.
^{*} For Access Connections v3.1 or above, Access Connections has the capability to provide limited control of wireless LAN adapters other than those listed below. This is in the Windows XP environment using the embedded NDIS 5.1 interface.
^{**} Not all security capabilities are available on all wireless LAN adapters.

Check the Web.

- **Access Connections**
ibm.com/pc/us/think/thinkvantagetech/accessconnections.html
- **ThinkVantage Technologies**
U.S. **ibm.com**/thinkvantage
Canada **ibm.ca**/think
- **Wireless**
ibm.com/pc/us/wireless
- **ThinkPad**
U.S. **ibm.com**/thinkpad
Canada **ibm.ca**/thinkpad
- **ThinkCentre™**
U.S. **ibm.com**/thinkcentre
Canada **ibm.ca**/thinkcentre
- **Accessories and upgrades**
U.S. **ibm.com**/pc/options
Canada **ibm.ca**/options
- **eSupport**
U.S. **ibm.com**/support
Canada **ibm.com**/support/ca/en
- **Presentations and 3D Tours**
U.S. **ibm.com**/pc/webcast
Canada **ibm.com**/ca/webcast
- **PC Services**
ibm.com/pc/services
- **Financing**
ibm.com/pc/financing
- **PC Product Training**
ibm.com/pc/training

Read on.

Download product literature.



- ThinkPad
ibm.com/pc/us/thinkpad/literature
- ThinkCentre
ibm.com/pc/us/desktop/literature

Call us.

Request an IBM PC Catalog or Buy Direct
1 888 SHOP IBM

Reseller locator
U.S.
1 800 IBM-4968
Canada
1 800 IBM-2255

PCD HelpCenter®
U.S. 1 800 426-7378
Canada 1 800 565-3344

IBM Asset Recovery Solutions for disposal and recycling of your systems (U.S. only)
1 888 SHOP IBM (option 1, enter 7615)



© Copyright IBM Corporation 2004

Produced in the USA
04-04
All Rights Reserved

Visit **ibm.com**/pc/safecomputing periodically for the latest information on safe and effective computing.

Warranty information:

For a copy of applicable product warranties, write to: Warranty Information, P.O. Box 12195, RTP, NC, 27709, Attn: Dept JDJA/B203. IBM makes no representation or warranty regarding third-party products or services.

¹ Public wireless access limited. Subscription may be required and fees may apply.

As an ENERGY STAR partner, IBM has determined that this product meets the ENERGY STAR guidelines for energy efficiency. ENERGY STAR is a U.S. registered mark.

IBM reserves the right to change specifications or other product information without notice. This publication could include technical inaccuracies or typographical errors. References herein to IBM products and services do not imply that IBM intends to make them available in other countries. IBM PROVIDES THIS PUBLICATION "AS IS," WITHOUT WARRANTY OF ANY KIND, EITHER EXPRESS OR IMPLIED, INCLUDING THE IMPLIED WARRANTIES OF MERCHANTABILITY OR FITNESS FOR A PARTICULAR PURPOSE. Some jurisdictions do not allow disclaimer of express or implied warranties in certain transactions; therefore, this disclaimer may not apply to you.

IBM, the IBM logo, HelpCenter, ThinkCentre, ThinkPad and ThinkVantage are trademarks of IBM Corporation in the U.S. and other countries. Intel, Intel Inside, the Intel Inside logo, Celeron and Pentium are registered trademarks of Intel Corporation. Linux is a registered trademark of Linus Torvalds. Lotus, Lotus Notes and Lotus SmartSuite are registered trademarks of Lotus Development Corporation. Microsoft and Windows are trademarks of Microsoft Corporation. Other company, product and service names may be trademarks or service marks of others.

Made in Japan, Korea, Mexico, Scotland and Taiwan.